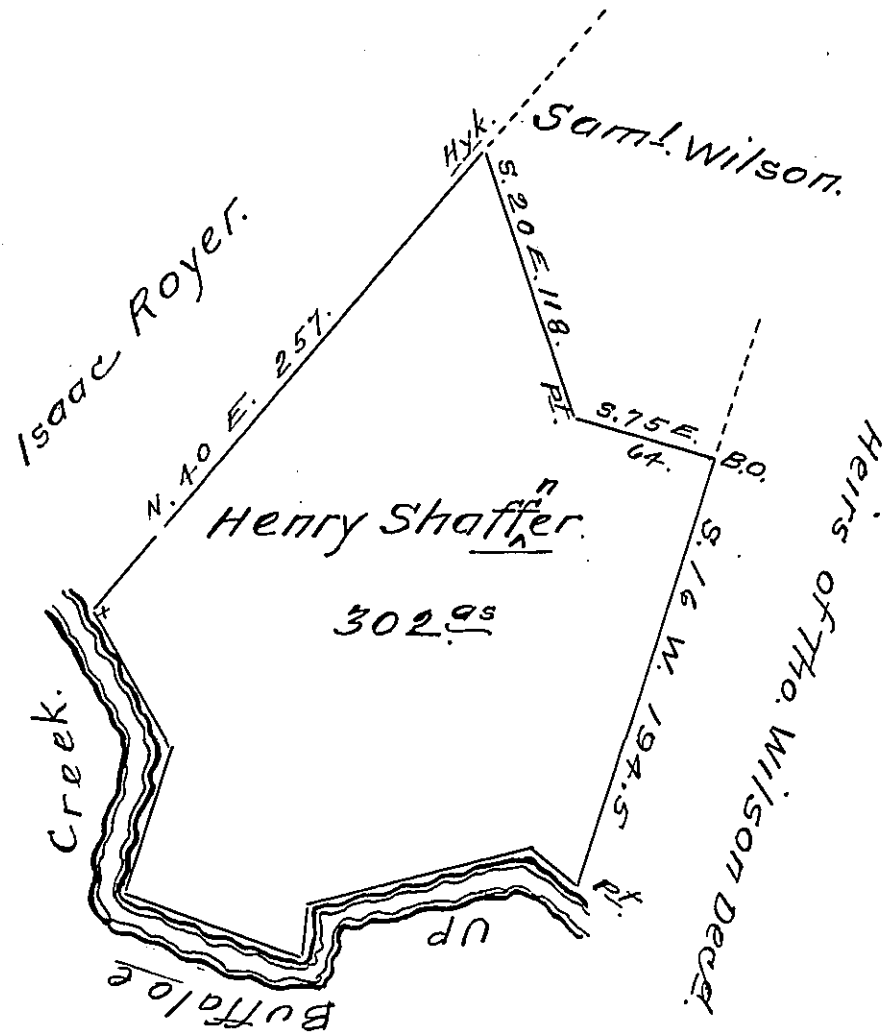


Cor. & Distances
up the Creek.

N. 49	W. 25.
S. 76	W. 100.
S. 6	W. 20.
N. 71	W. 83.
N. 16	E. 65.
N. 32	W. 66.
259 per.	



Situate in Kelly township Union (late Berks) County surveyed the 4th September 1832 by virtue of an order dated the 3^d day of April 1769 No 1858 Granted to Henry Shaffner Containing three hundred and two acres with the usual allowance &c.

Note - The same tract of land was surveyed the 12th day of August 1769 for Richard Edwards in pursuance of his order dated the 3^d day of April 1769, No. 714. - And now owned & occupied by Roan McClure in right of said Richard Edwards.

Pr. J. M. Hayes, Cor.

To Jacob Spangler Esq. }
Surveyor General Penn^a. }

IN TESTIMONY that the above is a copy of the original remaining on file in the Department of Internal Affairs of Pennsylvania, made conformably to an Act of Assembly approved the 16th day of February, 1833, I have hereunto set my Hand and caused the Seal of said Department to be affixed at Harrisburg, this twenty sixth day of August 1908.

Henry Howell
Secretary of Internal Affairs.